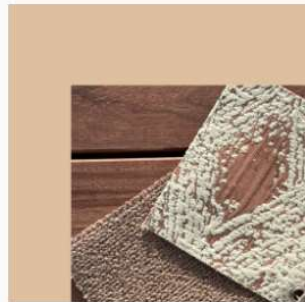
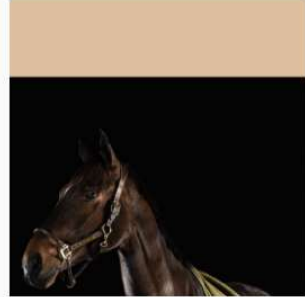


Mood board



Timeless interiors



Think sustainability, the way to be. LF Trading strongly believes in a zero - waste future and works hard to make this achievable for everyone. In our collection you will find mostly linen and hemp as it is our pride and joy to be able to present these again and again as the most exclusive textures and in the most subtle shades using these beautiful raw materials.

CAN YOU HEAR THE ECO?



LF Trading is a family business based in Belgium. Offering natural fabrics, timeless linens and having the most beautiful colors is the passion of Michèle Lievens, who took over the company from her parents Filip & Dorine Lievens.

We are partnered with several of Belgium's most prominent linen manufacturers, becoming a provider of many high end, exclusive, collections in Europe and abroad. Our linens come in a variety of colours and patterns, making LF Trading an easy choice when designing a new space. Whether it be for curtains or furniture, our goal is to provide our customers with the highest quality linens on the market today.



ECOLOGICAL | LOCAL | BIODEGRADABLE | SUSTAINABLE | ZERO WASTE

LF Trading takes great pride in being involved in every part of the process. Throughout every stage we continuously go to each site to stay informed with a hands-on approach. From by the farmers on the fields, to the scutching plant, and weaving mill - all the way to the lab for coloring and Martindale rub tests; we are there to be advised and collaborate for the next year's productions.



RETTING process

*Nature transforms the plant to allow the fiber to be extracted. The flax fibers are bound to the woody stems by natural pectins.

HARVEST process

*For a short time, large flax bales adorn the fields. The flax is harvested using customized machines. These pick up the retted flax plants and tie them together into large bales.



HACKLING process

*The flax is combed until only long, shiny fibers remain. Thousands of pins comb the flax until only the purest fiber remains. The remaining short fibers, the hackle tow, are separated from the longer fibers, the line. The flax line is gathered into hackled slivers, the raw material for the spinning mills. The line is used to product the finest textile for LF Trading.



CAN YOU SEE
THE
PASSION?

LF Trading procures linens, outdoor fabrics, velvets, and mohair for some of the most famous and influential people around the world. Below is a news clipping from a Belgian newspaper of our CEO, Michèle Lievens, receiving the Royal Warrant Certificate from Queen Mathilde of Belgium.



Queen Mathilde hands over the certificate of purveyor to the court to Michèle Lievens. © BELGA

Michèle (30) follows in the footsteps of her parents as purveyor to the court: "This title is of gold value, especially abroad"

IZEGEM



Michèle Lievens (30) of fabric store LF Trading received the certificate of purveyor from Queen Mathilde at the royal palace in Brussels on Tuesday. A unique moment for the Lievens family, because father Filip and mother Dorine already showed their daughter Michèle in 2013 with their business LF Selection.

Valentine Dumoulein 17-05-22, 17:41 Last update: 17-05-22, 17:50

We collaborate with exclusive, highly sought after, architects and interior designers that have designed for many celebrities such as Kim Kardashian, Kim Clijsters (tennis champion), Jean Claude Van Damme, George Clooney and many, many more. We also work directly with a multitude of furniture and curtain makers.

We have sales teams throughout Europe and customers from all over the world:

- Austria • Belgium • Croatia • Denmark •
- France • Germany • Hungary • Ireland •
- Italy • Japan • Liechtenstein • Lithuania •
- Luxembourg • Monaco • Poland • Portugal •
- Romania • Saint Barthelemy • Spain •
- Sweden • Switzerland • The Netherlands •
- United Kingdom • United States of America •

QUALITY IS OUR PRIORITY

Our belief in quality, sustainability, and transparency is noticed throughout the textiles industry with the following certificates awarded LF Trading.



The CO2 Neutral label guarantees that certified organizations actively calculate, reduce, and offset their carbon footprint to ensure credible climate action.



The Belgian Linen™ label stands for **linen fabrics that are woven in Belgium with European flax yarn**. To obtain the label, the linen has to comply to these criteria: The linen fabric has to be woven in Belgium. At least 85% of the weight of the flax used has to be natural flax fibers of EU-origin.



Masters of Linen® certifies that the fabric is made from 100% high quality European flax, entirely grown and processed in Europe.



STANDARD 100 by OEKO-TEX® certified products have been tested for harmful substances to protect your health. Tested for Toxic Chemicals. This label certifies that every component of the product, from the fabric to the thread and accessories, has been rigorously tested against a list of up to 350 toxic chemicals.



Cradle to Cradle Certification is a third-party sustainability label that requires achievement across multiple attributes: use materials that are safe for human health and the environment through all use phases, product and system design for material reutilization, such as recycling or composting.



The aim of the Global Organic Textile Standard (GOTS) is to define requirements to ensure organic status of textiles, from harvesting of the raw materials, through environmentally and socially responsible manufacturing up to labeling in order to provide a credible assurance to the end consumer.



"Sustainable" or "environmentally-safe" or "eco-friendly" furnishings are made and distributed in ways that protect our planet. SFC members take immediate steps to minimize carbon emissions, waste stream pollutants, un-recyclable content and primary materials from unsustainable sources from any product platform under their control.



LF TRADING
F A B R I C S

LF Trading BV
Zuidstraat 81
8680 Koekelare, Belgium
BTW BE 0892 644 577
Tel +32 (0)472 86 63 33
michele@lftrading.be
📷 @lf_trading 🌐 www.lftrading.be

Offices / Warehouse
Gistelstraat 34
8770 Ingelmunster, Belgium

